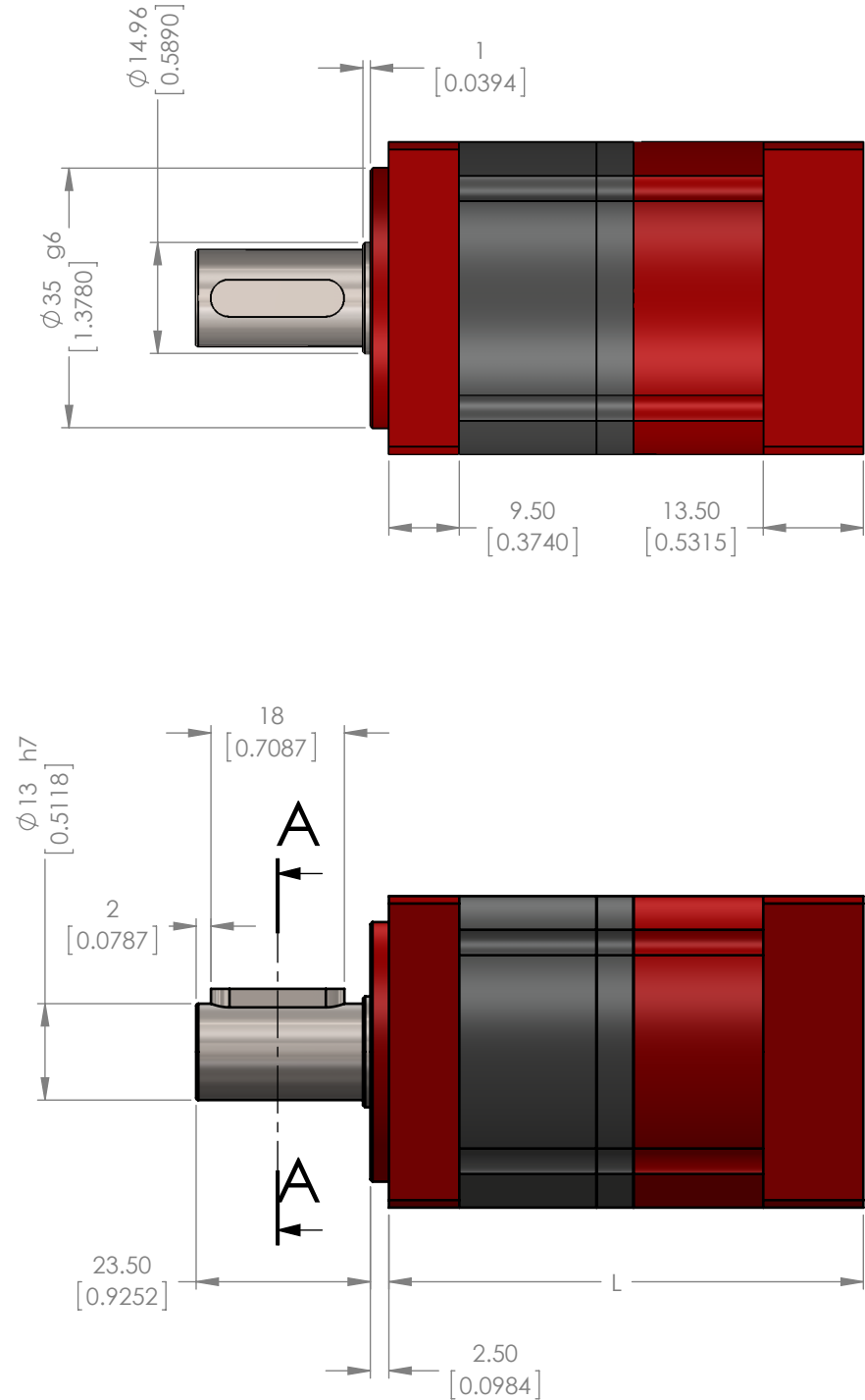
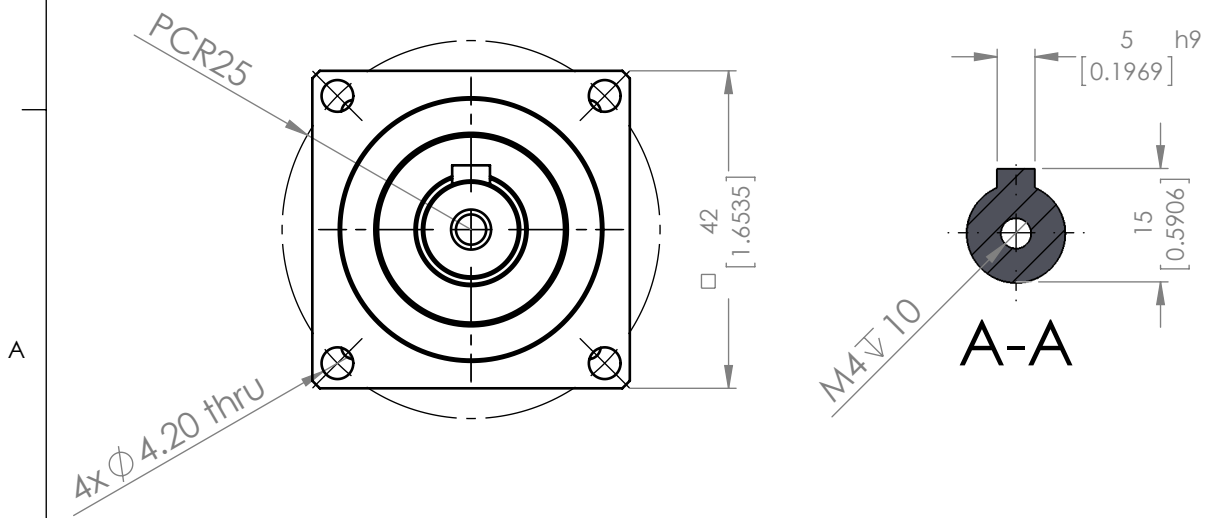


TECHNICAL DATA				
	Unit	Stages	Ratios	Value
D	Nm	1	3	13
			4,5	12
			7,9,10	11
		2	12,15,21,30	13
			20,28,40	13
			25,35,50	12
			49,70,100	10
		1, 2	3~100	3x nominal
	rpm	1, 2	3~100	6,000
	Kg-cm^2	1	3	0.021
			4,5	0.018
			7,9,10	0.017
		2	12,15,21,30	0.023
			20,28,40	0.020
			25,35,50	0.016
			49,70,100	0.020
	N	1, 2	12~100	219
	N	1, 2	3~100	438
	Nm/arc-min	1, 2	3~100	1.14
	%	1	3~10	95
		2	12~100	90
	Hrs	1, 2	3~100	20000
	-	1	3,4,5,7,9,10	
		2	12~100	
	Kg	1	3~10	0.5
		2	12~100	0.9
	Arc-min	1	3~10	≤6
		2	12~100	≤10
	dB	1, 2	3~100	≤65
	IP rating	1, 2	3~100	64
	Celcius	1, 2	3~100	-20 to 100

\*Sound pressure level; distance 1m @ 3,000RPM input speed



RATIOS	L
3:1 to 10:1	64[2.52]
12:1 to 100:1	87.5[3.445]

Unless otherwise specified, tolerance to be: CNS 4018 IT 14 Linear measures

0.5-3	± 0.1
3-6	± 0.1
6-30	± 0.2
30-120	± 0.3
120-315	± 0.5

**PROPRIETARY AND CONFIDENTIAL**  
THE INFORMATION CONTAINED IN THIS DRAWING IS THE SOLE PROPERTY OF MYOSTAT MOTION CONTROL INC. ANY REPRODUCTION IN PART OR AS A WHOLE WITHOUT THE WRITTEN PERMISSION OF COOLMUSCLE INC. IS PROHIBITED.

NAME	DATE	DO NOT SCALE DRAWING	DIMENSIONS ARE METRIC
M. Mitchell	9-June-2014		
CHECKED			
ENG APPR.			

**Myostat Motion Control Inc.**  
1+ 905-836-4441  
www.myostat.ca

**UNITS: mm [inch]**

**LX-Series Gearbox**

SIZE	PRT. NO.	REV
<b>B</b>	<b>LX-042-□□□</b>	<b>0.0</b>
SCALE: 1:1	WEIGHT: -	SHEET 1 OF 1