

D

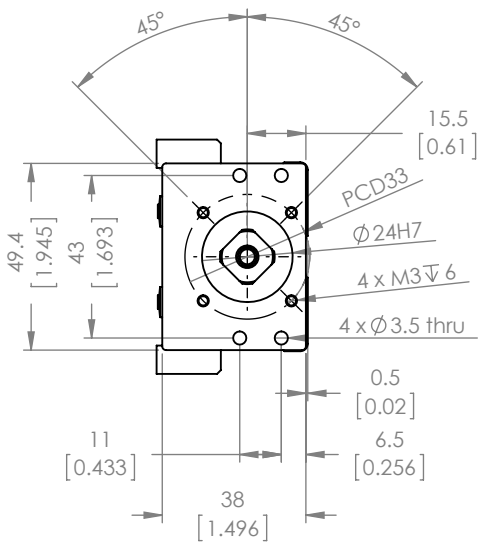
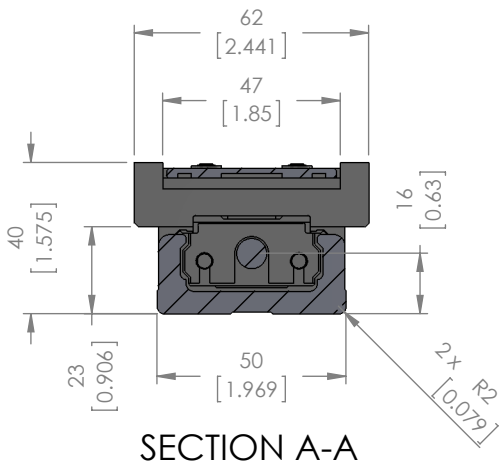
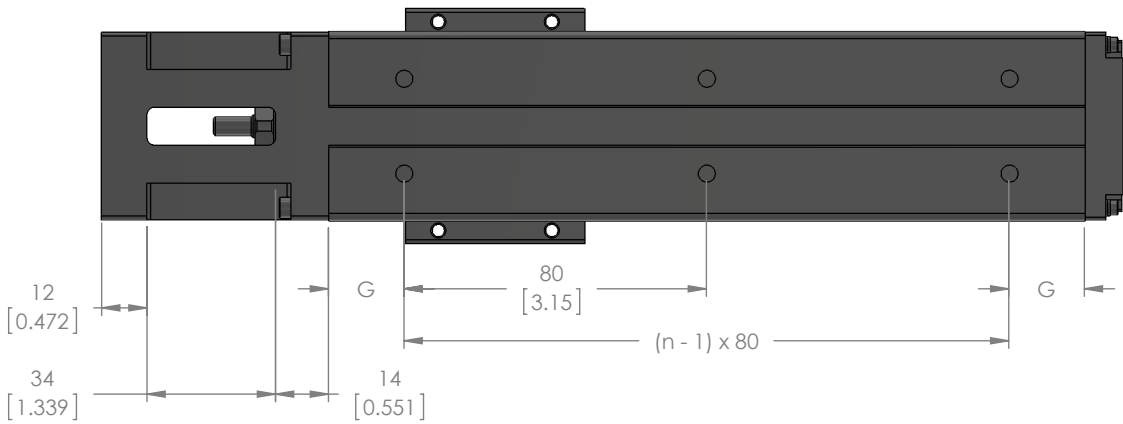
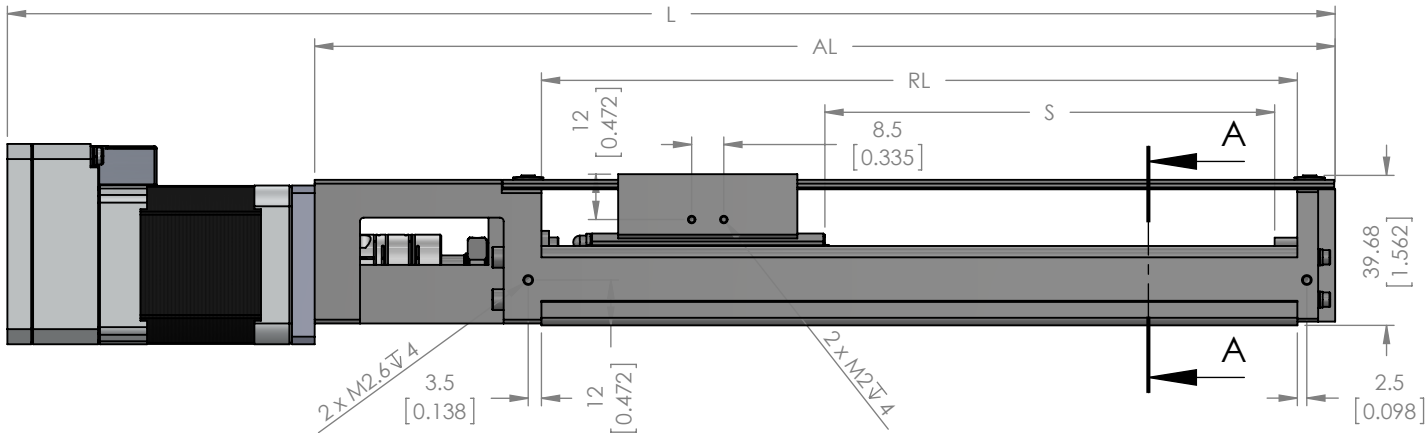
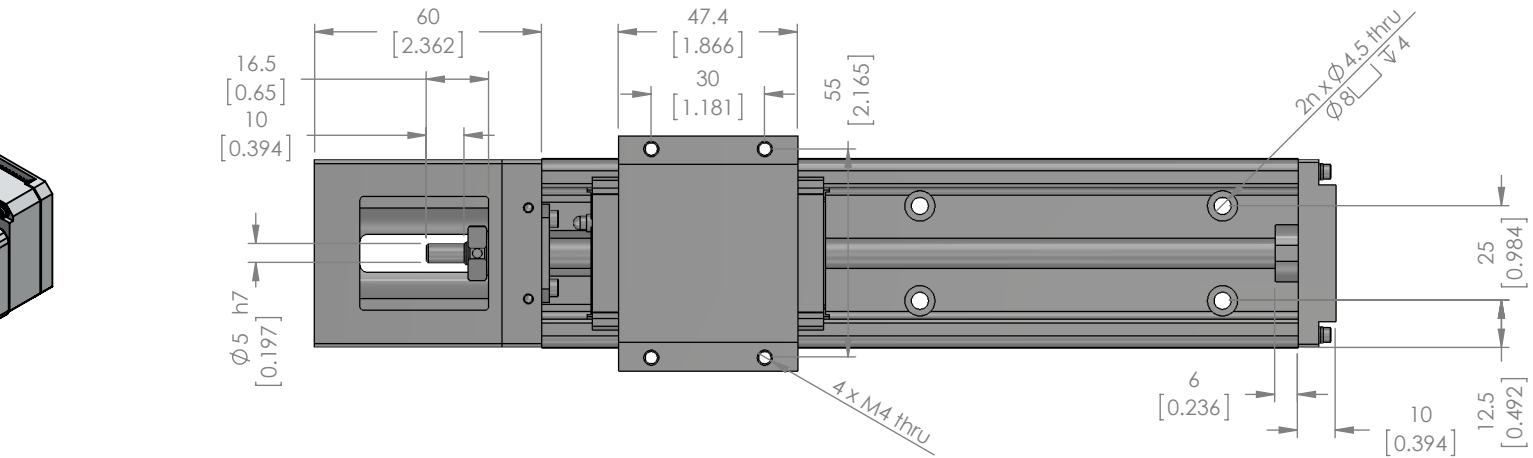
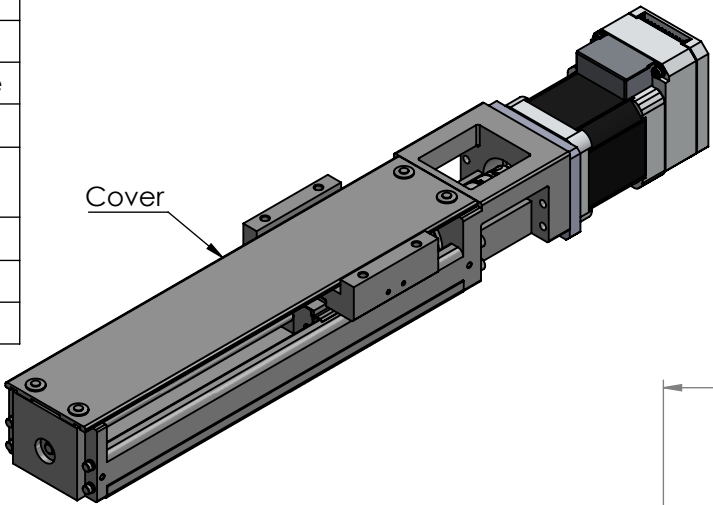
C

B

A

Technical Data			
	Unit	Value	
Ball Screw Lead	mm	2	6
Max. Velocity (w/ 17L30)	mm/s	100	300
Force (w/ 17L30)	N	1600	555
		Standard	P Grade
Repeatability	mm	±0.01	±0.003
Positioning Accuracy		No standard defined	0.02
Running Parallelism			0.01
Backlash		0.02	0.003
Starting Torque	N/cm	1.5	4


Bill of Materials		
Part No.	Description	Quantity
KR26	Actuator	1
KR26-BKT-NEMA17	Bracket	1
17L30C / 17S30C	Motor	1
RCLA16C-5-5	Coupling	1
M3-16mm	Screws	4
M3-5mm	Screws	4



*For single block, with cover. Please contact for more details.

UNITS: mm [inch]

PA26-02-□□□	S - Stroke Length	RL - Rail Length	AL - Actuator Length	L - Overall Length		G	n	Mass (kg)*	
				w/ 17S30	w/ 17L30			w/ 17S30	w/ 17L30
060	69 [2.717]	150 [5.906]	220 [8.661]	285.3 [11.232]	301.3 [11.862]	35 [1.378]	2	1.49	1.64
110	119 [4.685]	200 [7.874]	270 [10.630]	335.3 [13.201]	351.3 [13.831]	20 [0.787]	3	1.71	1.86
160	169 [6.654]	250 [9.843]	320 [12.598]	385.3 [15.169]	401.3 [15.799]	45 [1.772]	3	1.93	2.08
210	219 [8.622]	300 [11.811]	370 [14.567]	435.3 [17.138]	451.3 [17.768]	30 [1.181]	4	2.15	2.30

Unless otherwise specified, tolerance to be: CNS 4018 IT 14 Linear measures 0.5-3 ±0.1 3-6 ±0.1 6-30 ±0.2 30-120 ±0.3 120-315 ±0.5		NAME	DATE	DO NOT SCALE DRAWING	DIMENSIONS ARE METRIC
DRAWN		M.Mitchell	23-July-2014	TITLE:	
CHECKED				PA-Series Integrated Actuators	
ENG APPR.					
PROPRIETARY AND CONFIDENTIAL THE INFORMATION CONTAINED IN THIS DRAWING IS THE SOLE PROPERTY OF MYOSTAT MOTION CONTROL INC. ANY REPRODUCTION IN PART OR AS A WHOLE WITHOUT THE WRITTEN PERMISSION OF COOLMUSCLE INC. IS PROHIBITED.		 Myostat Motion Control Inc. 1+ 905-836-4441 www.myostat.ca		SIZE	PRT. NO.
		B		PA26-X-02-XXX-X-XXXX-17X30-X	REV
				0.0	
SCALE: 1:2		WEIGHT: -		SHEET 1 OF 2	

