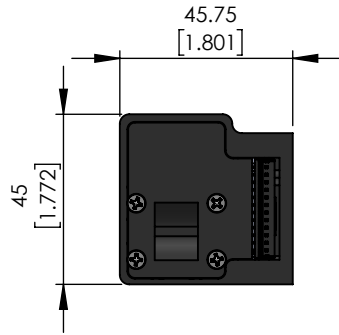


Technical Data		
Stroke (S)	12.7-50.8	mm
Screw Lead****	2.54 / 0.1	mm/inch
Max. Speed*****	40	mm/s
Rec. Load Limit	20 / 4	N / lbf
Max. Thrust*****	100 / 22	N / lbf
Nominal Backlash	0.127	mm
Input Voltage	24	VDC
Max. Current Draw	1.5	A

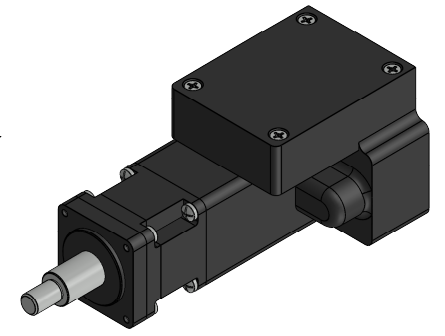
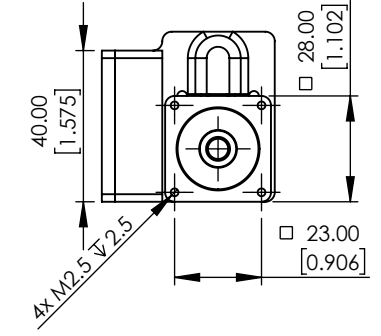
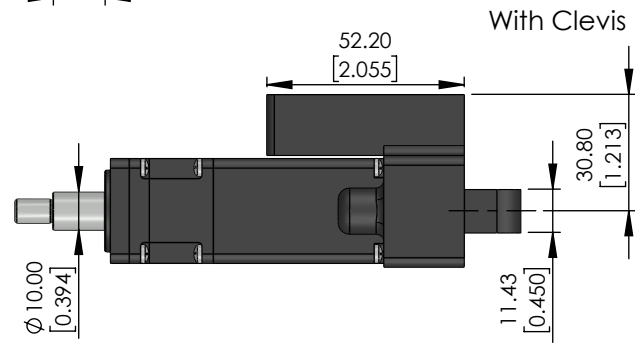
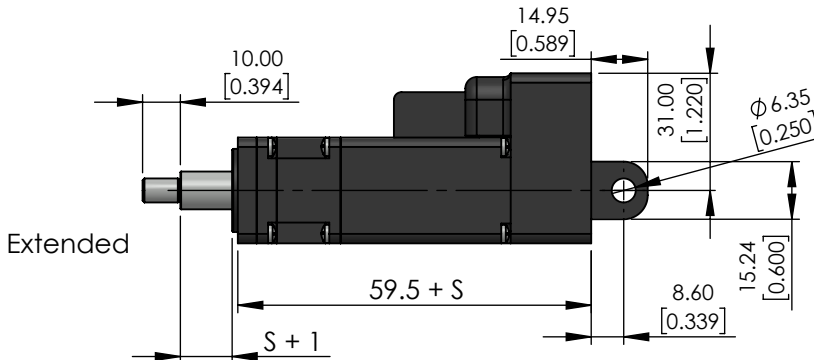
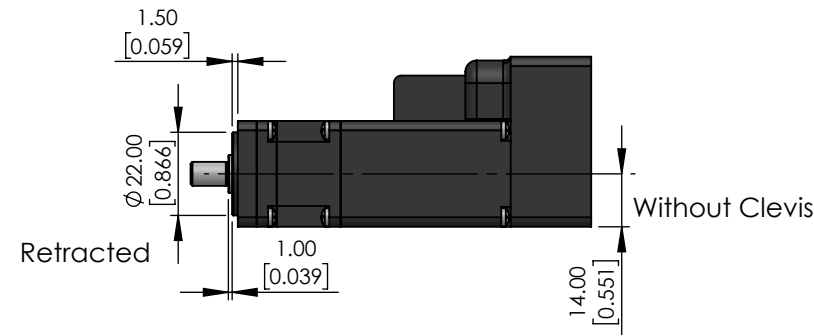


Part#: **CSR-11-2.54-X-CM1-C**

Screw lead

Stroke (mm)

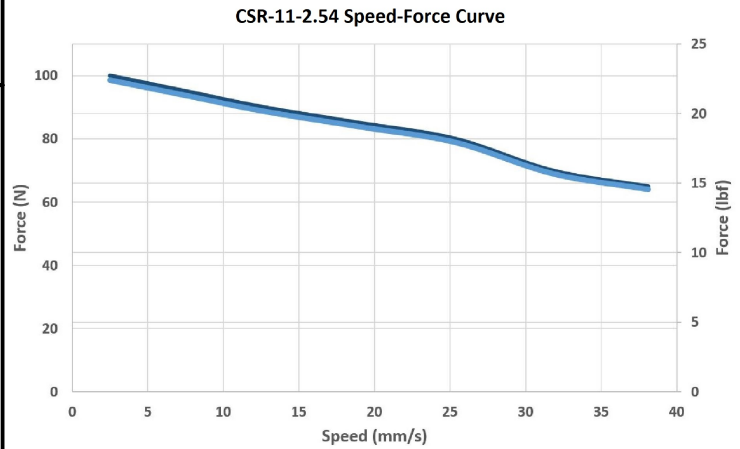
Revision/customization code



Notes:

- * At longer strokes dimension may vary
- ** Rod end customizations available
- ***Clevis (optional) customization available
- ****Additional screw leads available
- *****Lower speeds and loads will result in extended life

CSR-11-CM1 units use the Cool Muscle 1 integrated servo controller. Available with -EB firmware for use with the EB01 EtherCAT Bridge



Unless otherwise specified, tolerance to be: CNS 4018 IT 14 Linear measures 0.5-3 ±0.1 3-6 ±0.1 6-30 ±0.2 30-120 ±0.3 120-315 ±0.5	NAME	DATE	DO NOT SCALE DRAWING	UNITS: mm [inch]
	DRAWN	M.Dank	July 16, '24	TITLE: CSR-11 NEMA 11 Integrated Actuator
	CHECKED	x	x	
PROPRIETARY AND CONFIDENTIAL THE INFORMATION CONTAINED IN THIS DRAWING IS THE SOLE PROPERTY OF MYOSTAT MOTION CONTROL INC. ANY REPRODUCTION IN PART OR AS A WHOLE WITHOUT THE WRITTEN PERMISSION OF MYOSTAT MOTION CONTROL INC. IS PROHIBITED.	ENG APPR.	x	x	SIZE A PRT. NO. CSR-11-2.54-X-CM1-C REV 0.0
		Myostat Motion Control Inc. +1 905-836-4441 www.myostat.ca		SHEET 1 OF 1